

Display Report

Analysis Info

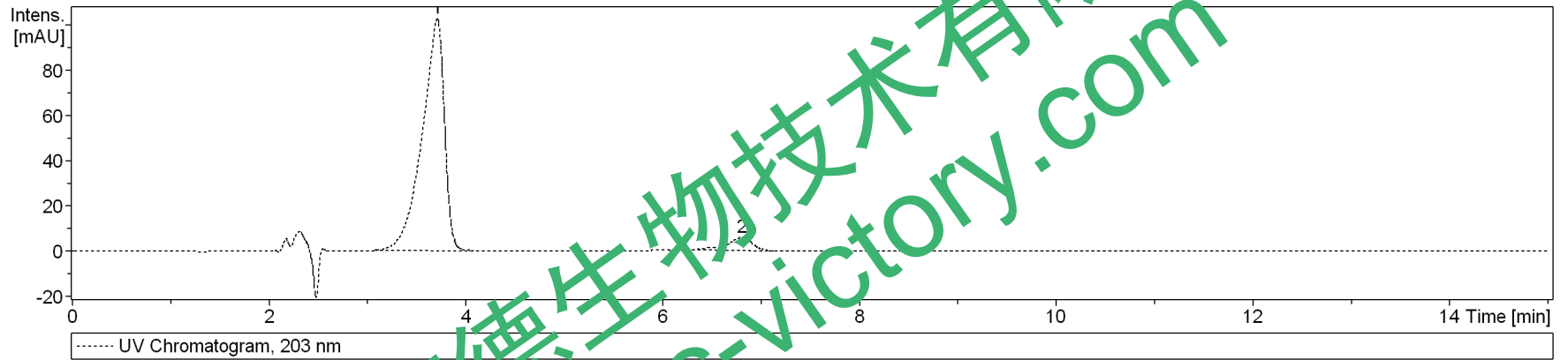
Analysis Name D:\Data\test\20141209\Rd_87_01_432.d
Method 432.m
Sample Name Rd
Comment

Acquisition Date 12/9/2014 6:09:22 PM

Operator bruker
Instrument amaZon SL

Acquisition Parameter

Ion Source Type	ESI	Ion Polarity	Negative	Alternating Ion Polarity	on
Mass Range Mode	UltraScan	Scan Begin	70 m/z	Start End	2200 m/z
Capillary Exit	-140.0 V	n/a	n/a	ray Drive	50.6
Accumulation Time	58189 μ s	Averages	5 Spectra	Auto MS/MS	off



#	RT [min]	Area	Area Frac. %
1	3.7	1622.30	38.1
2	6.8	107.19	2.4

Display Report

Analysis Info

Analysis Name D:\Data\test\20141209\Rd_87_01_432.d
Method 432.m
Sample Name Rd
Comment

Acquisition Date 12/9/2014 6:09:22 PM

Operator bruker
Instrument amaZon SL

Acquisition Parameter

Ion Source Type	ESI	Ion Polarity	Negative	Alternating Ion Polarity	on
Mass Range Mode	UltraScan	Scan Begin	70 m/z	Scan End	2000 m/z
Capillary Exit	-140.0 V	n/a	n/a	Trap Drive	50.6
Accumulation Time	58189 μ s	Averages	5 Spectra	Auto MS/MS	off

